

We are different.

We design and build some of the most exotic alternative automobiles in the world.

HumanCar® Street-legal LSV (top)

It's ready to rock your neighborhood, park, fitness center, resort, campus, etc...

The ubiquitous FM4 HumanCar®

F1 style monocoque chassis, electric/human hybrid, The HumanCar® Imagine™ (aerospace quality ribs shown)

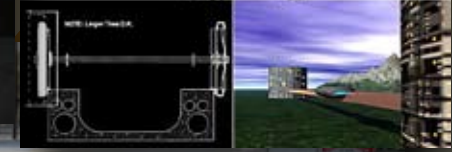
A Problem Solver. Fleet, taxi, gov't, delivery, commercial, city, private, etc...

The 189 mph Rod. Bad to the bone.

Special order 'Secret Art' racing /street vehicle with optional 900hp electric combination hybrid engine package

It's more fun than you will ever be allowed to have again.

HumanCar® Investment Grade Vehicles



What's in it for you? Why should you care?

HumanCar®
Whenever you're ready

Why should I care?

The HumanCar® represents an Identity and Innovation not seen in the USA for a while. It's aerospace green technology and street theatre all at once. Plus, it has the power to heal nations, literally, both in health overhead, carbon footprints and national security. The HumanCar® makes you more fit, safe and less in debt.

What's in it for me?

Early adopters will have the benefit of knowing the rewards longer. For example, if you were to start commuting on a HumanCar® it would have an immediate and profound impact on you and the people in your world. It's also fun as powder skiing. People get out of cars to clap and scream: They can't control themselves when they see the FM4 HumanCar®.

Is that a pedal car?

No. It's 100% automotive- the chassis is designed for 100 mph+ and will carry 1000lbs. The transmission will accept a variety of motor options right now. You can generate electricity and pump water with it as well: It's sustainable.

The FM4 HumanCar® is more race car than anything.

When are they available?

HumanCar® Acceptance will be taking pre-orders starting 1 August 2007.

What does the future hold?

The F1 tub style, monocoque chassis Super-HumanCar® will be available this year.

It's the SR-71 of LSV's. Completely Exotic and unique. The Imagine model is "Compliant with the Future" and will go big in the light delivery and taxi markets.

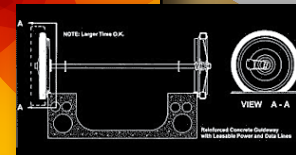
Are there not a million electric car companies every day?

We are the only human/electric/alternative car company in the world. Pure race DNA. The Patented BODY-STEER™ chassis takes it one step beyond.

Will HumanCar make it?

We are 30 years old now with a 200 year business plan. We are not scared to Think Big. Our open-standards proposal creates opportunity for everyone. We don't have the overhead of OEM manufacturers and wish to create sustainable transportation options for all walks of life.

Equally with advanced technology.



HumanCar® Electric Vehicle Technology

HumanCar®
Whenever you're ready

FM4 HumanCar® Street legal Low Speed Vehicle (LSV)

Simple system uses relays (mechanical and/or electronic) to connect both motors to battery in parallel, or when brake lever actuated, reconnects in series. This creates a high output voltage that goes into a small bank of ultracaps, as they get charged at up to four times system voltage. Then a DC/DC converter (chopper type, regulated) passes current into storage batteries.



FM4

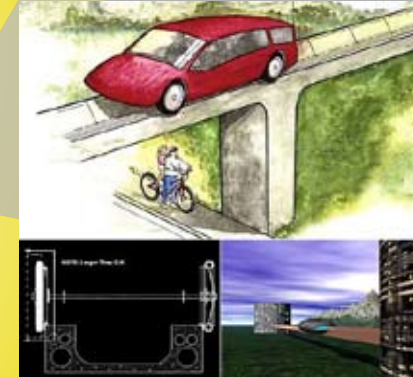
Imagine™ HumanCar® Exotic Monocoque Chassis LSV

For our higher power version, the DC motors are fed a Pulse Width Modulated feed for quasi-speed/torque regulation.

Imagine™ HumanCar® w/ optional motor, ultra-exotic LSV

The upper high end car is a 3 phase AC frameless set up, with special controller adapted from machine tool industry, and 200 VDC Lith-Ion batteries.

Stamping the body bulkheads and rails out of super thin Domex steel is the way to go for the body is the frame. Directly competitive cost-wise with space frame. Body for free with this method.



Imagine



The Rod - 600+hp ethanol
900hp electric hybrid optional

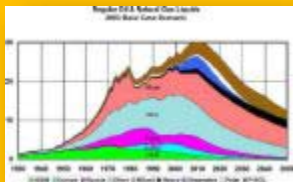
Note: USA Green Technology Alert- 4 Imagine LSVs under construction now

HumanCar®
Whenever you're ready



PROBLEMS:

- * Petroleum based system dysfunctional
- * Crisis - National Security tied to oil usage
- * No product in Electric/Human Hybrid LSV market
- * Daily unmet demand for HumanCars via web-site.
- * Giant R/D budgets slow typical progress to markets



Oil as finite resource

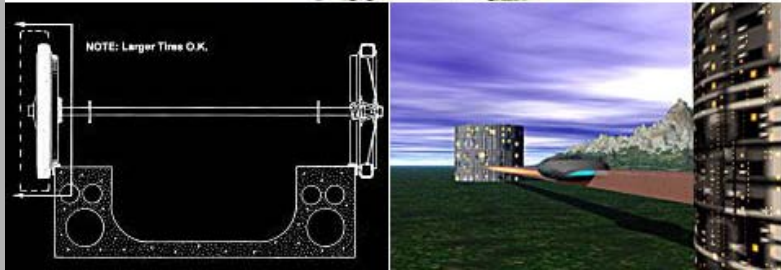
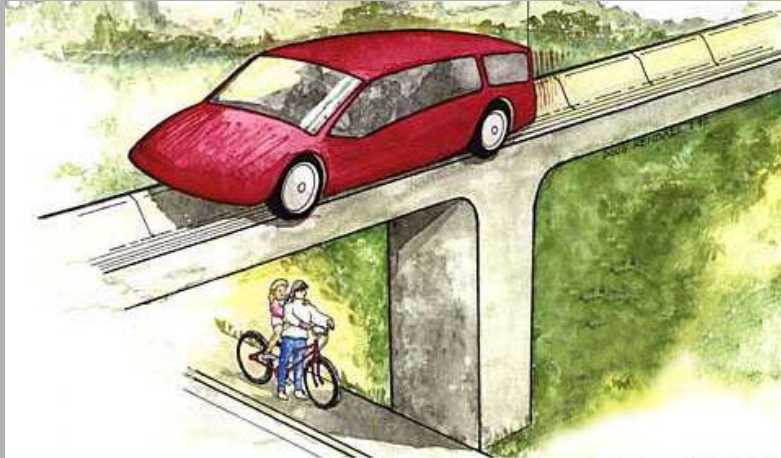
SOLUTIONS:



- * Electric Hybrid HumanCar® to fill new NEV market
- * 3 Models from \$5/100k ready to manufacture
- * Immediately expedite orders via www.humancar.com web-site
- * Oil independence decreases National Security Threats
- * Lowers Carbon Footprint Overhead
- * Federal Neighborhood Electric Vehicle (NEV) designation



SyncGuideway™ - Important and relevant IP to HumanCar Inc.



The HumanCar® fits on and may be powered by the SyncGuideway. Embedded "Safe-Rail" technology provides universal safety net.

Declaration of LMV standards

Preliminary Specifications:

In order to create the narrowest practical lane width a track width is specified at 48.5 inches (1232 mm), defined as the distance between the inside face of the wheel rims. Both front and rear track shall be the same. Tire size and wheel base dimensions are not specified, but such vehicles shall be able to negotiate a 30 foot radius circle.

Suspension components shall be configured so that lateral movement of the wheel position is less than plus or minus 1/16th of one inch.

Room shall be provided for a one inch wide flange facing inward on each wheel rim.

In general, interface to a track width of 1.2 Meters (47.24") shall be provided.

Bulkheads shall be constructed with 2.00" diameter locating holes spaced 24.00 inches apart, twelve inches on either side of the vehicle centerline, and that four 0.375" diameter holes on a 3.250" bolt circle shall be concentric to the centerlines of the aforementioned holes, with the 3/8ths diameter holes arranged in a square and level pattern.

Minimum unloaded vehicle weight shall be 200 pounds, and gross vehicle weight shall not exceed 1500 pounds.

Auxiliary power sources shall be regulated to restrict vehicle speed to 25 mph.

All other D.O.T. guidelines shall be followed.

EXAMPLE OF USAGE:

Abu Dhabi, UAE \$5B Green City project.

"Zero-Carbon Output" ground-up Intentional Green Community.

Potential fit for SyncGuideway/HumanCar technology.



Masdar Launches the World's First City Targeting Zero-Carbon and Zero-Waste...

14/5/2007: Abu Dhabi, United Arab Emirates, May 8th, 2007 – The world's first attempt to create a zero-carbon, zero-waste city was officially launched today during Cityscape in Abu Dhabi. The new six square kilometer energy, science and technology community will open in late 2009. The development is ... [Read More...](#)

HumanCar®
Whenever you're ready

Market Size for alternative fuel and LSV vehicles

estimated combined size 3M vehicles per year

HumanCar®
Whenever you're ready

HumanCar® to capture >.01% of light fleet, taxi, military, gov't and public markets

Scenarios: Utilities, Military, Local Gov't, Fleet, Green Cities, Public, Parks, Campus

Examples:

* NY Power Authority: 13 year study '91/'04- 750 NEV's, 4M miles, 678,108 gallons saved. 60 tons carbon reduced via Green Zones Pilot Program.

* Military Installations: No off-site refuel logistics. Low-maintenance, quiet and reliable: LSVs like the HumanCar® fit current new guidelines and laws.

* Police: Palm Springs: CA NEV's are used as police cars. Plans underway to incorporate into local gov't fleet. California is the largest market for NEVs, with over 20,000 on the road now.

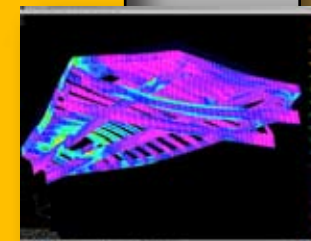
* SF Bay: Area 'station-cars' NEVs in place between home, mass transit stations and work-places.

* Campus, industrial parks and airports enhance mobility w/o increasing pollution.
Incentives: Tax credits of 10% not to exceed \$4k

17M cars sold in US per year (3M to fleet alone)

Trends: " If buyers demand hybrid technology at the same pace they did when air bags and anti-lock brakes were first introduced, cars equipped with hybrid engines could make up 20 percent of the overall car market by 2010 and 80 percent by 2015."

-Booz Allen Hamilton study, 7/047



Competition:



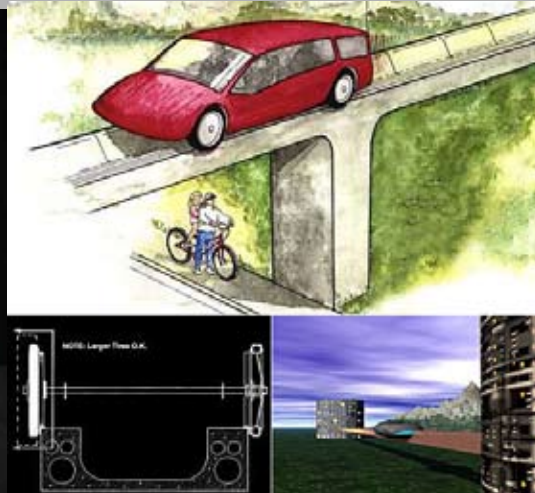
Popular in the UK, manufactured in India the REVA G-Wiz is not yet available in US. MSRP \$13,600



Zap! Cars, recently funded \$79m to go full scale. The ZAP-X is \$54,900, elegant and advanced. Potentially delivering 644 horsepower and speeds up to 155mph. Not yet available. This vehicle sets a gateway for the performance market of which HumanCar® will penetrate.

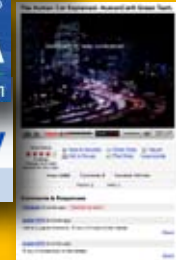
The HumanCar® electric/human hybrid currently has no direct competition. The symbiotic Prius, ZAP-X, G-Wiz automobile market tips early adopters and creates an avenue towards future HumanCar® sales.

Our answer: HumanCar®
designed
retro rocket roadster



Aerospace quality monocoque sections of v2 SuperHumanCar® - rendering of HumanCar® on SyncGuideway - FM4 prototype

HumanCar®
Whenever you're ready



Partners

Intel®, US TACOM, Cascadia Alliance, EPA, Clean Cities Coalition, AXP, NuVinci, NREL Cooperative Research and Development Agreements (CRADA), 3E Strategies, ATC, Wilwood, Risse Technology

Sales Strategy-

- On-Line Direct - Shipped to customer
- Co-Op with boutique auto dealers
- Possible global territory service/sales reps.
- Concentrate on blooming LSV market; light delivery, taxi, retail

Revenue Model

- .01% disruptive replacement of light delivery market
- Focus on giant 'green' market with patented design- create social network for users



HumanCar® NEV/LSV street-legal for mass markets

A "Neighborhood Electric Vehicle" (NEV) is technically defined as a "Low Speed Vehicle" (LSV) by the National Highway Traffic Safety Administration's (NHTSA) Federal Motor Vehicle Safety Standard (FMVSS) No. 500.

Per FMVSS No. 500, a LSV means a vehicle: that is 4-wheeled, with a top attainable speed in 1 mile of more than 20 mph and not more than 25 mph on a paved level surface, and with a Gross Vehicle Weight Rating of less than 2,500 pounds.

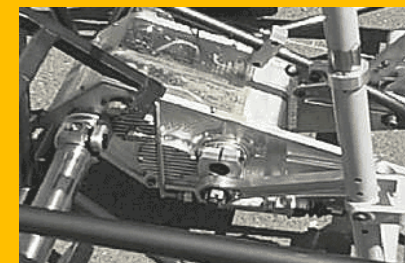
Wikipedia Definition of NEV:

A Neighborhood Electric Vehicle (NEV) is an American term for a speed limited battery electric vehicle (usually 25 miles per hour in the U.S.A.) restricted by law to operation on roads with speed limits not exceeding 35 MPH.

HumanCar® models fit into markets such as taxi, fleet, gov't, commercial and retail scenarios immediately by way of the NEV/LSV designation.

Vehicles bypass DOT regulation, create new markets and may be operated by most anyone.

DOE estimates that almost 56,000 NEV electric vehicles were in use in 2004.



**Providing advanced technology to the
Sustainable Transportation Markets.
2007 HumanCar® Market Penetration
Investment Grade Vehicle Offering**

The anatomy of vision: How and Why in 5 years 1 million people will be driving a HumanCar®

The only human/electric hybrid powered LSV is the world.

Immediate global demand for Low Speed Vehicles LSVs

Compliant with the Future™

It's like the SR-71 you could never have.

HumanCar® has 3 models ready for production.
Advanced prototype sales and distribution partnerships 2007

